

State of Wyoming Corner Record

(In compliance with the *CORNER PERPETUATION AND FILING ACT*, Wyoming Statutes, 1997, Section 33-29-140, et. seq., and the Rules and Regulations of the Board of Registration for Professional Engineers and Professional Land Surveyors)

Reverse side of this form may be used if more space is needed.

Record of original survey and citation of source of historical information (if corner is lost or obliterated). Description of corner monumentation evidence found and/or monument and accessories established to perpetuate the location of this corner. Sketch of relative location of monument, accessories, and reference points with course and distance to adjacent corner(s) (if determined in this survey). Method and rationale for reestablishment of lost or obliterated corner.

G.L.O. Record: Edwin James, U.S. Deputy Surveyor, June 5, 1871; 80.00 ChainsSet a sand stone 18 x 12 x 10 for corner to sections 17, 18, 19 & 20.

Found: No evidence of original monumentation. The northwest corner of Section 20 was established from a old fence corner post harmoniously related to corners north, south and west. The corner post was held as being 40' south and 40' west of the true corner position. Also found a broken loose stone approximately 72' east of the held fence corner post that appeared to be a loose county road "wccr" stone.

Set: No. 6 x 30" rebar with 3 1/4" aluminum cap marked as noted below. Set a 5' steel fence post witness 1' north.

Aluminum Cap Markings
 A.V.I. P.C.
 T13N R64W
 S18|S17
 S19|S20
 1999
 P.L.S. 2927

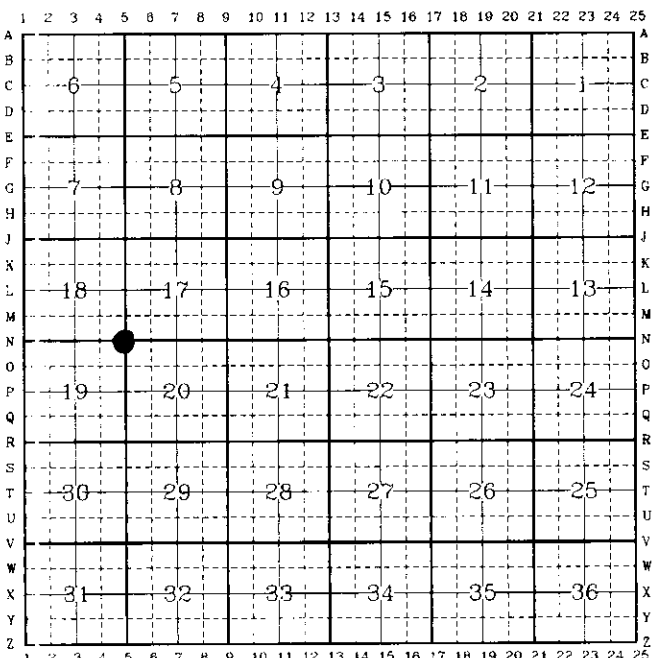
See back of this sheet for measurements to other found or set corners in the area.


 RECORDED 7/19/1999 AT 1:49 PM REC# 256571 BK# 1527 PG# 1035
 DEBRA K. LATHROP, CLERK OF LARAMIE COUNTY, WY PAGE 1 OF 2

Date of Field Work: April 26, 1999

Office Reference: A.V.I. Job No.: 2-2122

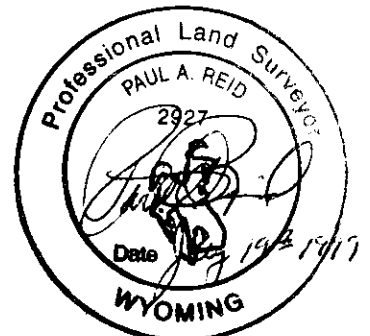
CROSS INDEX DIAGRAM



Firm/Agency, Address
 Paul A. Reid, P.L.S.
 A.V.I., p.c.
 2035 Westland Road
 Cheyenne, WY 82001

This corner record was prepared by me or under my direction and supervision.
 SEAL & SIGNATURE

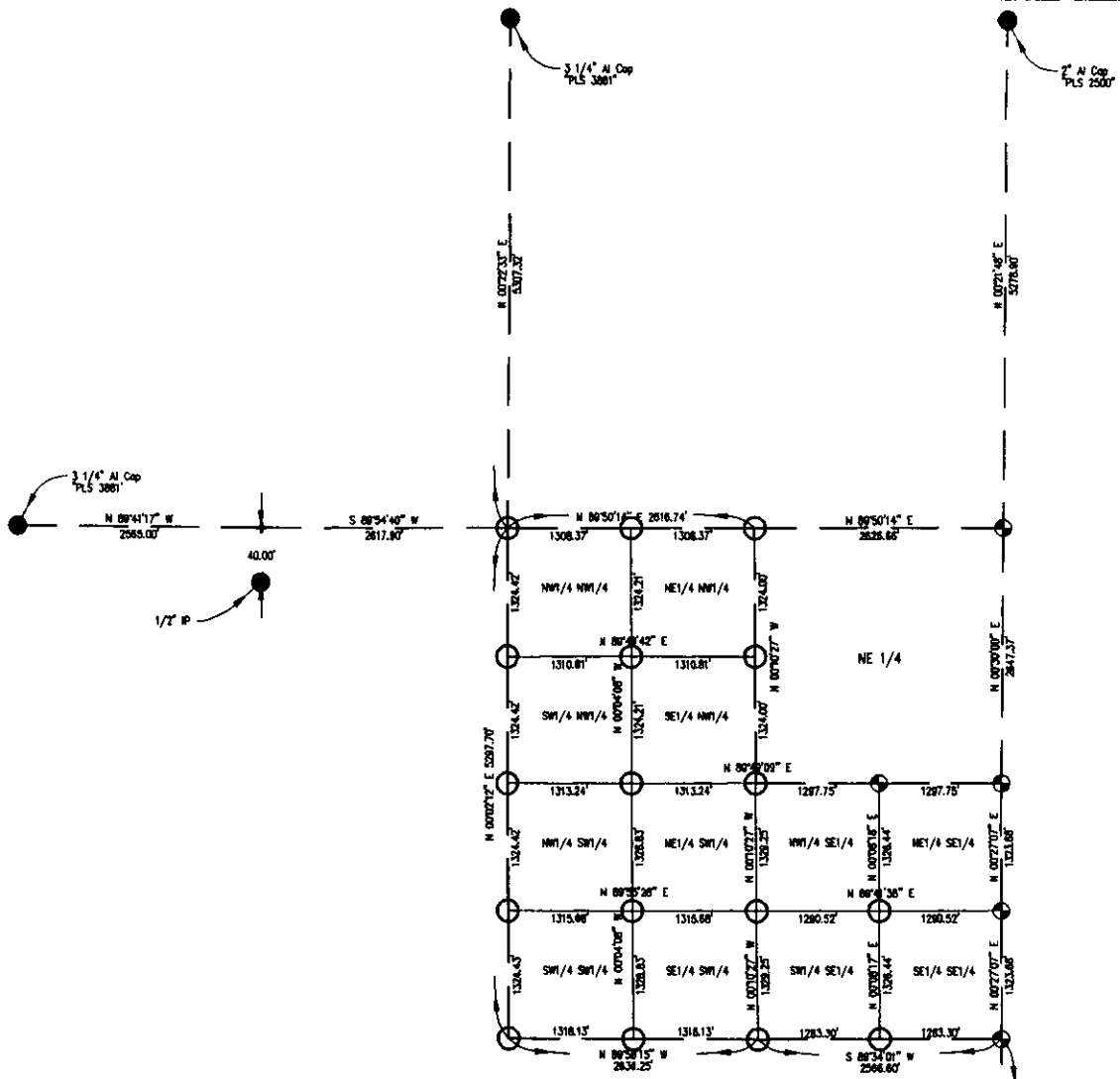
Telephone Number:
 (307) 637-6017



Corner Name: NW Cor.
 SBRPEPLS/PLSW: March 1994

Section: 20

T.13N., R.64W.; 6th P.M. Cross-Index No.: N-5



- Found Monument as Noted
- Set No. 6x30" Rebar W/3 1/4" AL. Cap
- ⊙ Set No. 5x24" Rebar W/2 1/2" AL. Cap

SKETCH OF SURVEY
SECTION 20 SUBDIVISION
T.13N. R.64W. 8th P.M.
LARAMIE CO., WYOMING

B.L.O.
Brose Cap
1512 553 715M

